

**Evolvere™**  
Facades

LEAD THE FUTURE

Discover how  
we bring  
**architectural  
visions to life**



**Evolvere™**  
**Facades**  
LEAD THE FUTURE



MIAL MUMBAI INTERNATIONAL AIRPORT



# Empowering Innovation & Transforming Tomorrow



## Table Of Content

1. About us
2. Our Mission & Vision
3. Our Services
4. Meet The Team
5. Our Product Range
6. About Our Infrastructure
7. Innovation For The Future
8. Quality Standards
9. Safety Policy
10. Sourcing Policy
11. Technical Collaborators
12. Our Projects
13. Our Clients
14. Contact Us

ADANI CORPORATE OFFICE, AHMEDABAD



# About Us

Evolvere Facades Pvt. Ltd. stands out as a premier manufacturer of high-quality facades for commercial, residential, and institutional buildings. **With over 20 years of rich industry experience, we have become leaders in delivering facade solutions that seamlessly blend functionality with elegance.** Our comprehensive approach encompasses every step of the process, from initial consultation to final installation, guaranteeing that we fully realize your architectural vision.

## Two Decades of Expertise

Over 20 years of experience in facade engineering, delivering groundbreaking solutions with precision.



### CIDCO, Navi Mumbai

CIDCO Exhibition and Convention Centre (CECC) embodies modern architectural principles, seamlessly combining functionality with aesthetic appeal.



### Unicorn 844, Mumbai

This development is distinguished by its unique & dynamic facade design, featuring key elements such as unitized glazing, semi-unitized glazing, vertical louvers & fins.

## Global Standards

Our advanced manufacturing facility is powered by industry-leading Italian FOM brand machines, designed for superior precision.

# Our Mission & Vision

At Evolvere Facades, we place our clients and partners at the heart of everything we do. By delivering tailored, innovative facade solutions, we align the goals of property developers and architects with ecological, economic, and regulatory requirements, shaping iconic structures for a sustainable future. Our vision is to push the boundaries of what's possible in facade engineering, leveraging the latest technologies and materials to create stunning and functional building envelopes that inspire awe and admiration. We aspire to be known for our innovative technologies, unique designs and state-of-the-art quality measures.



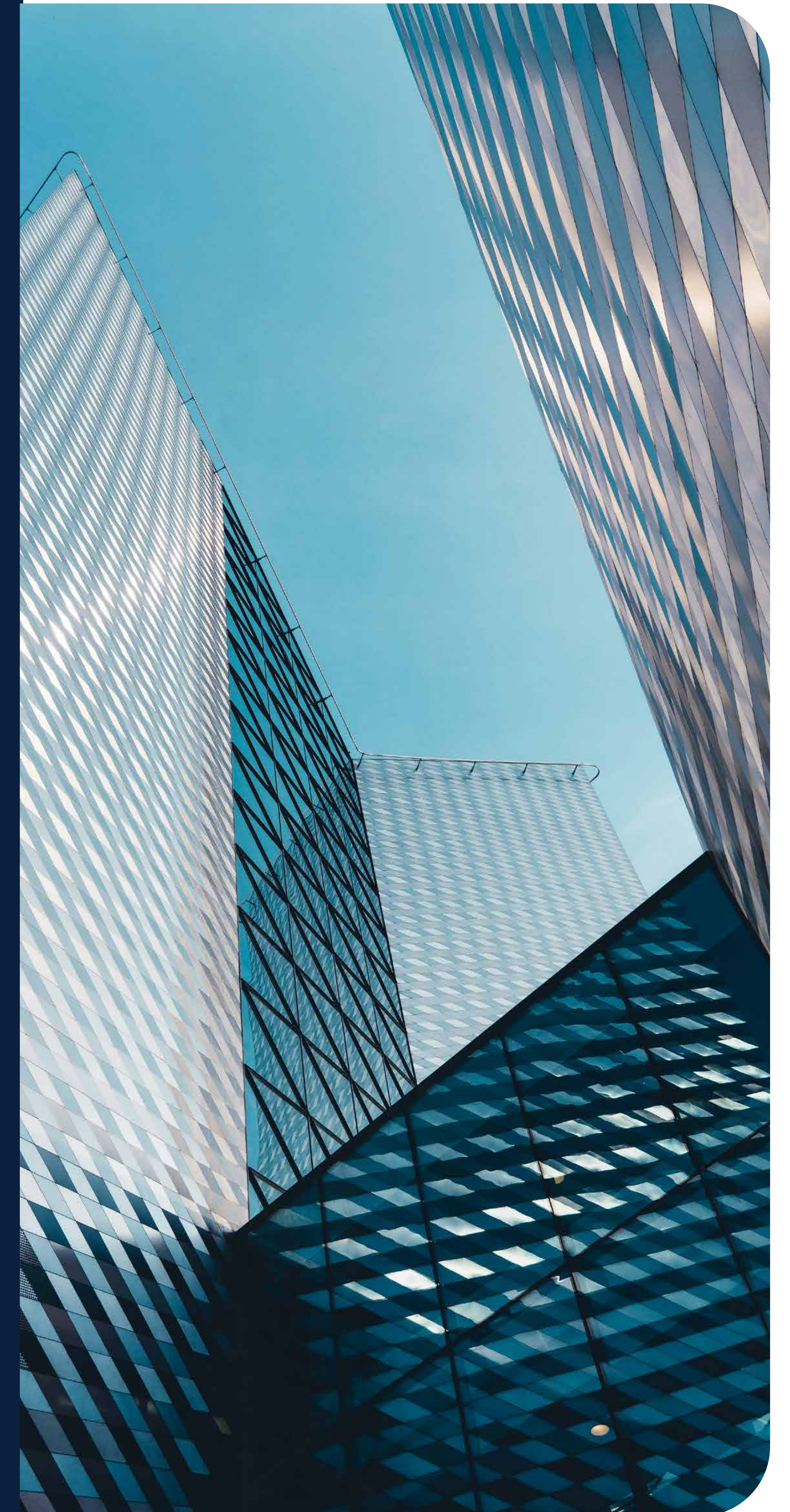
## Commitment to Excellence

We deliver cutting-edge facade solutions that meet the highest standards of safety, functionality, and design.



## Sustainability at Core

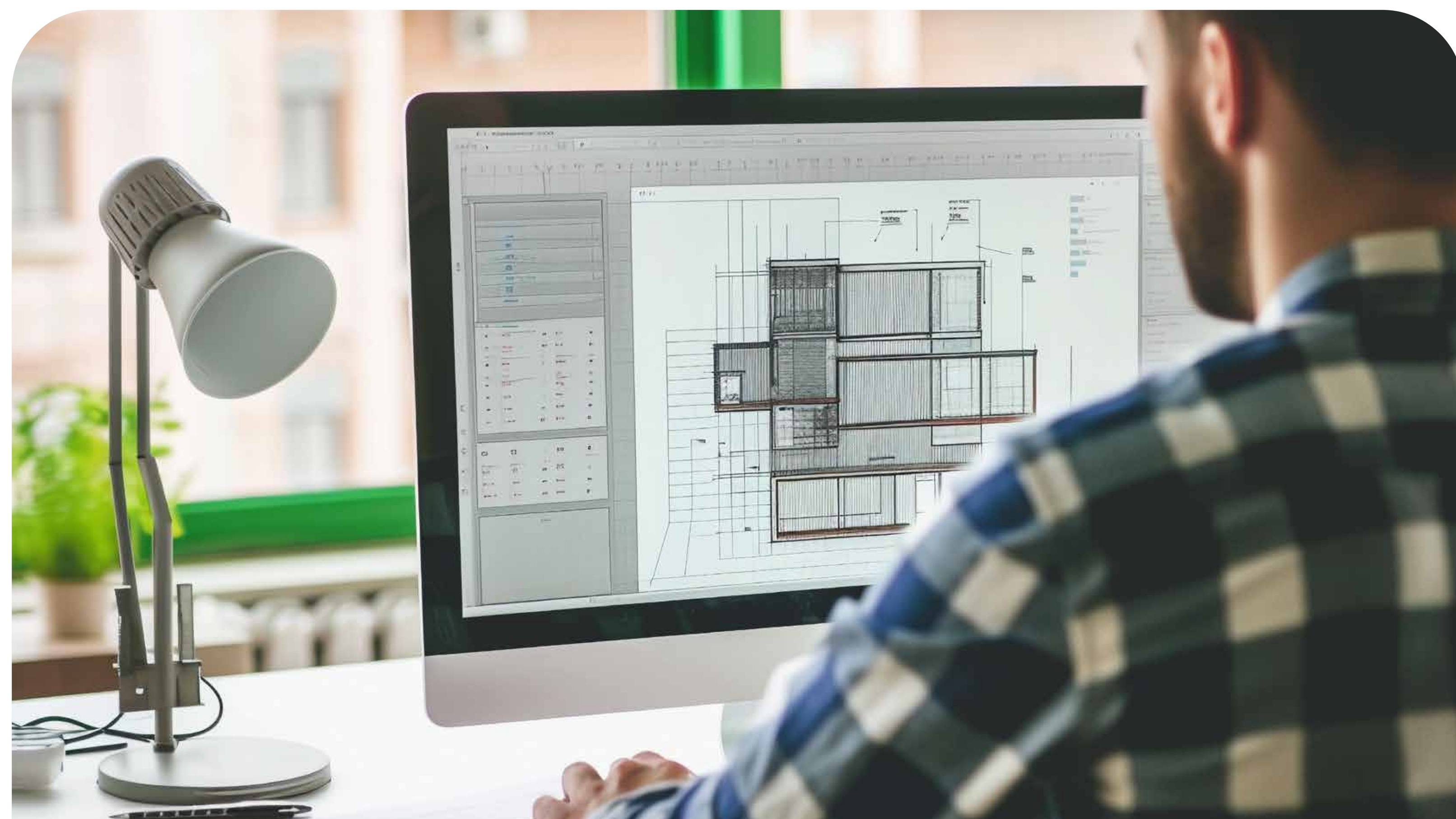
Our focus on sustainability ensures that every project contributes positively to the environment.



## Our Services

# Pre-design Analysis

Our design and estimation teams work with the architects to develop the conceptual design of the facade, including the selection of materials and finishes. We provide input on how the design will impact the building's energy efficiency, natural light, and interior ambience.



### Testing & Certification Guidance

We recommend appropriate testing and certification requirements to meet local building codes and regulations, ensuring compliance and safety.



### Cost Optimization

Our pre-design analysis identifies cost-effective solutions without compromising on quality, helping to balance project budgets with design aspirations.

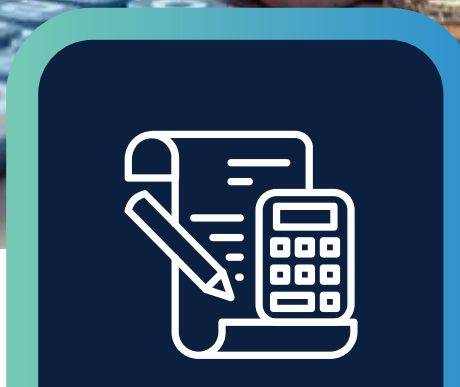


### Maximizing Facade Efficiency

Our team advises on key performance criteria for facades, including structural stability, energy efficiency, acoustic insulation, fire protection, and water resistance.

## Our Services

# Budgeting



We can provide early cost estimates for different facade options to help the architect and owner make informed decisions during the pre-design phase. This can include evaluating the long-term costs and benefits of different facade materials and systems.

# Engineering



Our passion lies in finding ways to optimize the design and construction of the facade to minimize costs without compromising performance. This can include selecting more affordable materials, simplifying the installation process, or rethinking the design to reduce waste.

# Design

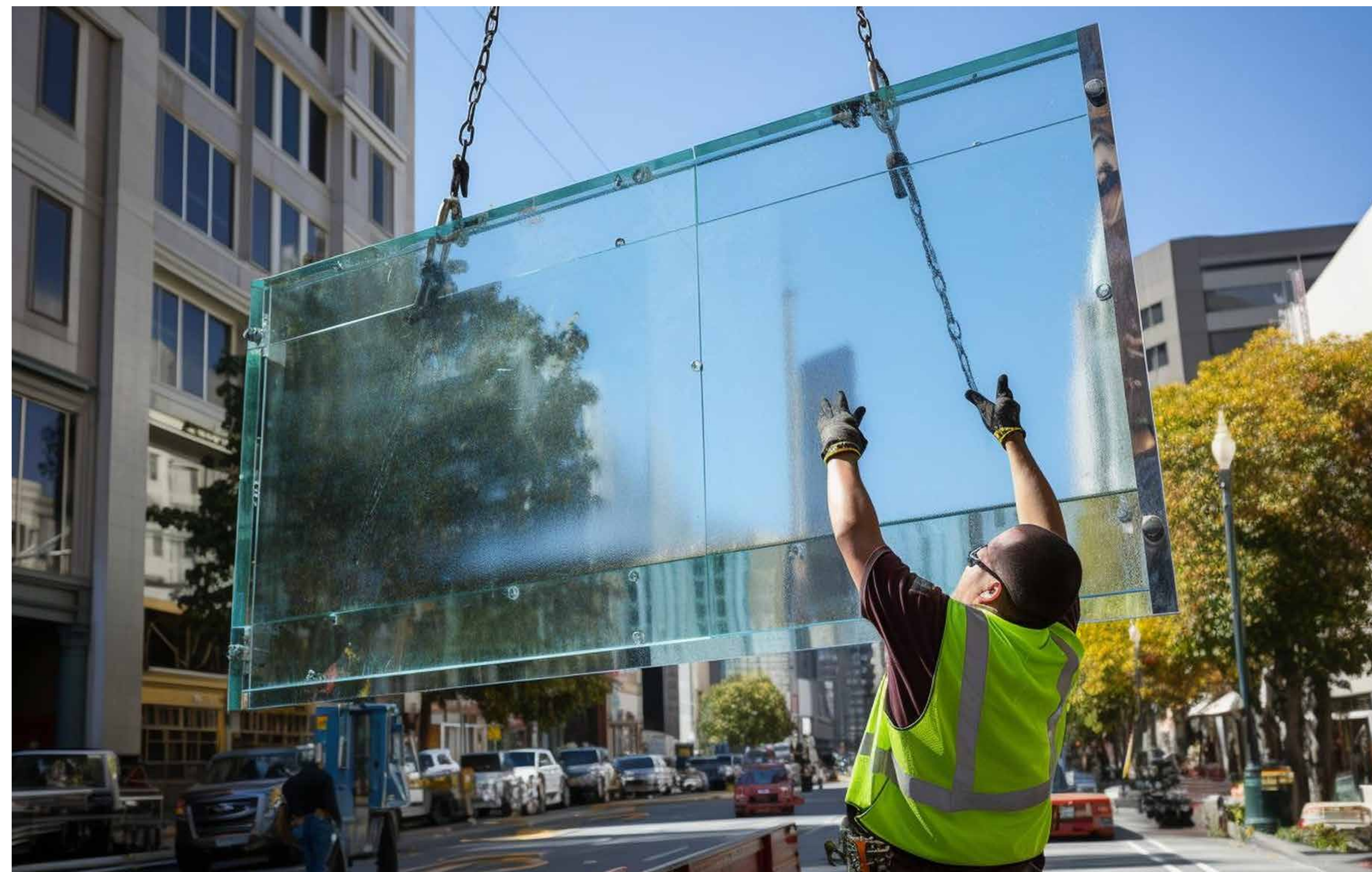


Design is a crucial aspect of our work, as it determines the functionality, durability, and aesthetic appeal of the building facade. We provide detailed design and engineering for the building facade, including the selection of materials and finishes.



# Manufacturing

Our manufacturing process is driven by uncompromising quality control, ensuring that each component meets global standards for durability, performance, and design excellence. Our state-of-the-art facility accommodates a diverse range of materials, enabling us to deliver bespoke solutions that seamlessly align with the architectural vision and functional requirements of every project.



# Installation

It begins with an in-depth site assessment, where we evaluate environmental conditions, structural dynamics, and logistical complexities to craft a comprehensive installation strategy. With every detail planned in advance, our team ensures that materials, equipment, and safety protocols are seamlessly coordinated before work commences.



# Testing

Prior to installation, our facades undergo a rigorous series of evaluations designed to simulate real-world challenges. This comprehensive testing includes water penetration resistance, structural load performance, air infiltration analysis, fire safety verification, and thermal efficiency assessments.



# Commissioning

Once testing is successfully completed, we meticulously verify that every component functions optimally—from weatherproofing seals to thermal insulation and structural alignment. This critical stage involves detailed inspections, performance documentation, and formal certification, validating that the facade meets every functional, aesthetic, and environmental requirement with precision.

# Meet The Team

Our team brings together diverse expertise and years of experience to drive innovation and excellence in every project.



**Building the Future**  
with Precision

Our leadership is dedicated to crafting **innovative & sustainable solutions** that transform spaces and stand the test of time.



## Mr. RC Shekar

**B.Arch | Managing Director**

Mr. RC Shekar has rich experience in architectural services, specializing in comprehensive building designs for institutional, commercial, and residential projects. He is committed to the highest standard of architectural quality and services.



## Mr. RL Narayan

**B.Arch, COA, IIA | Managing Director**

Mr. RL Narayan, "Architect Narayan," has vast experience in interiors and architectural services. He has successfully carried out numerous projects Pan India. His leadership in architectural design brings a perfect balance of modernity and functionality, ensuring that every project achieves the highest standards.



## Mr. RB Narayan

**B. E. Civil | Director**

Mr. Badri Narayan is a distinguished leader with over 25 years of extensive experience in the field of facade and glazing systems. His dedication to the industry has earned him recognition as a thought leader in facade engineering, and he continues to push boundaries in creating state-of-the-art facades that blend aesthetic appeal with durability and functionality.

# Our Product Range

A diverse portfolio of innovative facade systems and architectural elements, **designed to enhance both functionality and aesthetics for every project.**



**Curtain Wall System**

Unitized  
Semi-Unitized  
Stick/Conventional



**Aluminum Louvers**

Energy-efficient shading systems for ventilation and sun control.



**Frameless Façade & Spider Glazing System**

Minimalist glass solutions for an unobstructed view.



**Tension Rod System**

Advanced support systems combining elegance and structural strength.



### Canopy (ACP/Glass)

Stylish overhead structures for protection and enhanced appeal.



### Aluminum Casement

Sleek and functional designs for modern windows/doors.



### Roof Domes & Glass Skylight

Bringing natural light indoors with stunning design elements.



### ACP/Terracotta/Metal Cladding

Durable and versatile facade materials for various styles.



### Stone Cladding

Timeless stone finishes for a natural and sophisticated look.



### Sliding/Revolving Doors

Smart and seamless entry solutions for high-traffic areas.



### Patch Fitting Doors

Frameless door systems for a clean and modern appearance





### Building Maintenance Unit (BMU)

Efficient systems for maintaining and cleaning high-rise facades.

# About Our Infrastructure

Our advanced manufacturing facility is equipped with Italian FOM brand machines, precision tools, & modern infrastructure to ensure seamless fabrication of aluminum, glass, stainless steel cladding, & fire-rated products.

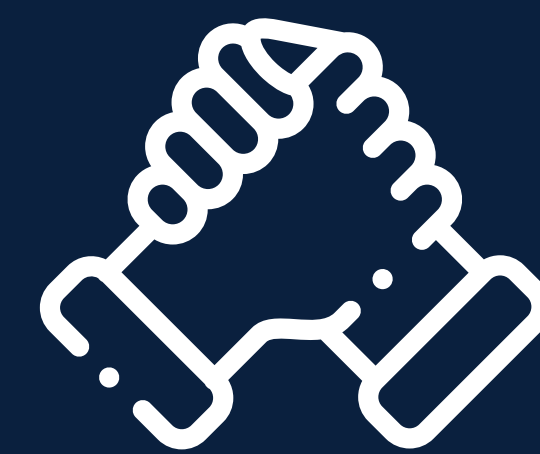
## Comprehensive Installation & Support

-  **Ensuring timely execution** without compromising on quality.
-  **Providing maintenance** and performance evaluation services.



## Expert Craftsmanship

Every process is meticulously planned and executed to uphold the integrity, durability, and aesthetic excellence of our façade solutions.






## Skilled Workforce

Our manufacturing Unit is driven by a dedicated team of engineers, fabricators, and technicians who bring decades of experience to every project.

# Innovation for the Future

As the façade industry evolves, we remain committed to embracing new technologies, sustainable practices, & innovative designs. Our infrastructure is constantly upgraded to align with the latest advancements, ensuring that we continue to redefine excellence. Our focus areas include:

-  Incorporating recyclable & energy-efficient components.
-  Partnering with vendors who meet international compliance standards.
-  Reducing waste and maximizing material efficiency in production.



**Designed for efficiency & excellence, our facility enables us to deliver durable, high-performance façade solutions for projects of any scale & complexity.**

# Quality Standards

We adhere to the highest industry standards, ensuring every façade system meets **stringent performance, safety, and durability benchmarks.**



## Commitment to Excellence

At Evolvere, quality is of paramount importance.



## Quality Assurance Framework

Our team ensures regular quality control & continuous improvement to maintain high standards.



## Superior Quality and Precision

We give great emphasis on high quality products with effective installation procedures



## Certified Systems for Reliability

All our systems undergo timely testing and are certified by renowned test laboratories.



# Safety Policy

---

At EFPL, safety isn't just a policy — it's a responsibility we uphold with care and commitment. We believe that a safe and healthy work environment is fundamental to the well-being of our team, partners, and everyone impacted by our operations. By fostering a culture of safety and continuous improvement, we ensure that every project we undertake reflects our dedication to protecting lives and creating a secure workplace.



## Regulatory Compliance

We adhere to all relevant occupational health and safety regulations, ensuring that every member of our team is equipped with the knowledge and resources to work safely and confidently.



## Proactive Prevention

Our proactive approach focuses on preventing accidents, injuries, and occupational hazards, encouraging open communication and collective responsibility for maintaining the highest safety standards.

# Sourcing Policy

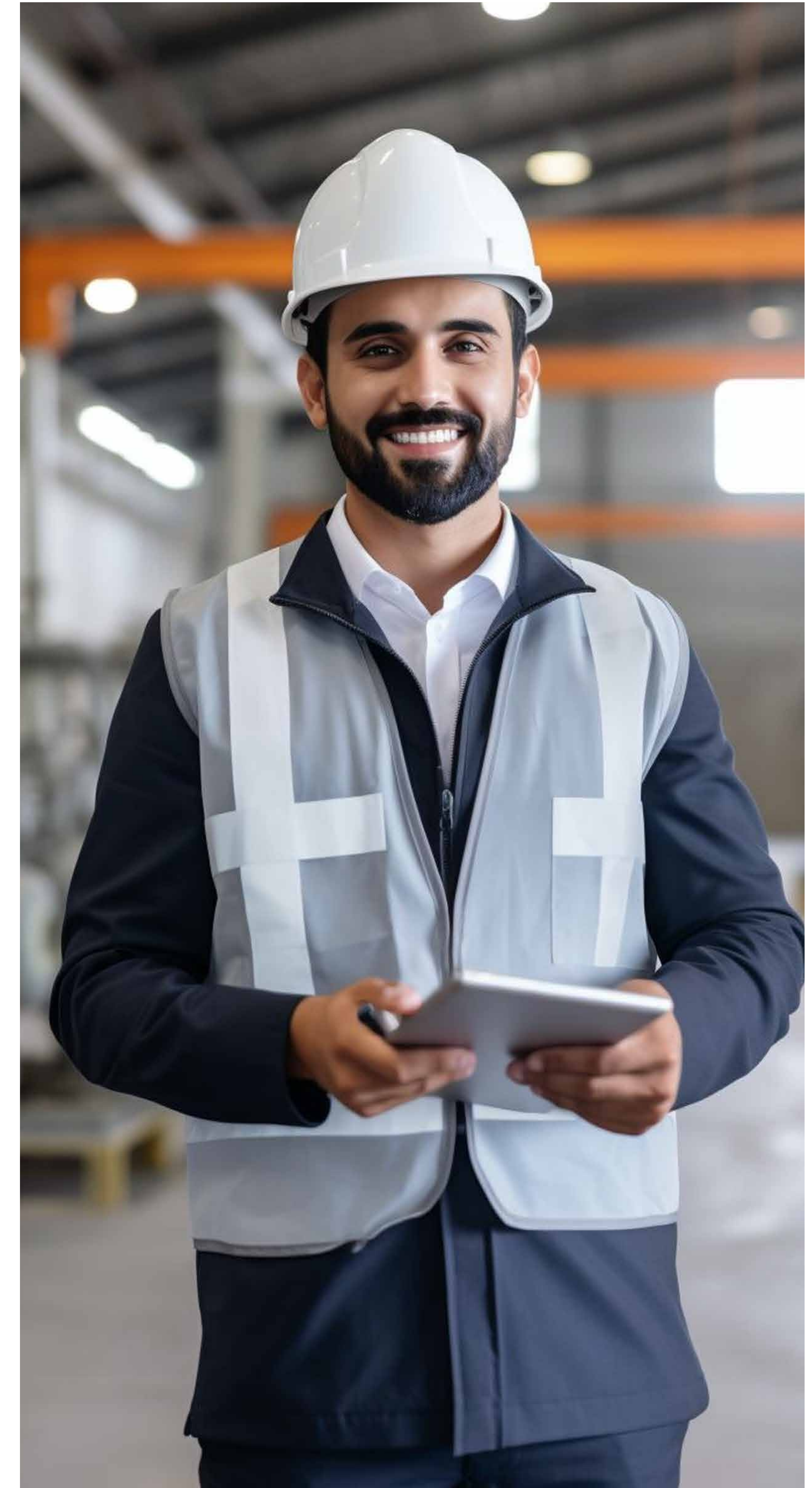
Our approach focuses on optimizing procurement timelines, maintaining cost efficiency, & ensuring the seamless availability of materials to support project execution. Through continuous collaboration & process enhancements, we uphold reliability, consistency, & excellence in every aspect of our sourcing operations.

## Working together with Suppliers

- ✓ Assurance of required product quality & safety
- ✓ Competitive pricing
- ✓ Fulfillment of on-time delivery



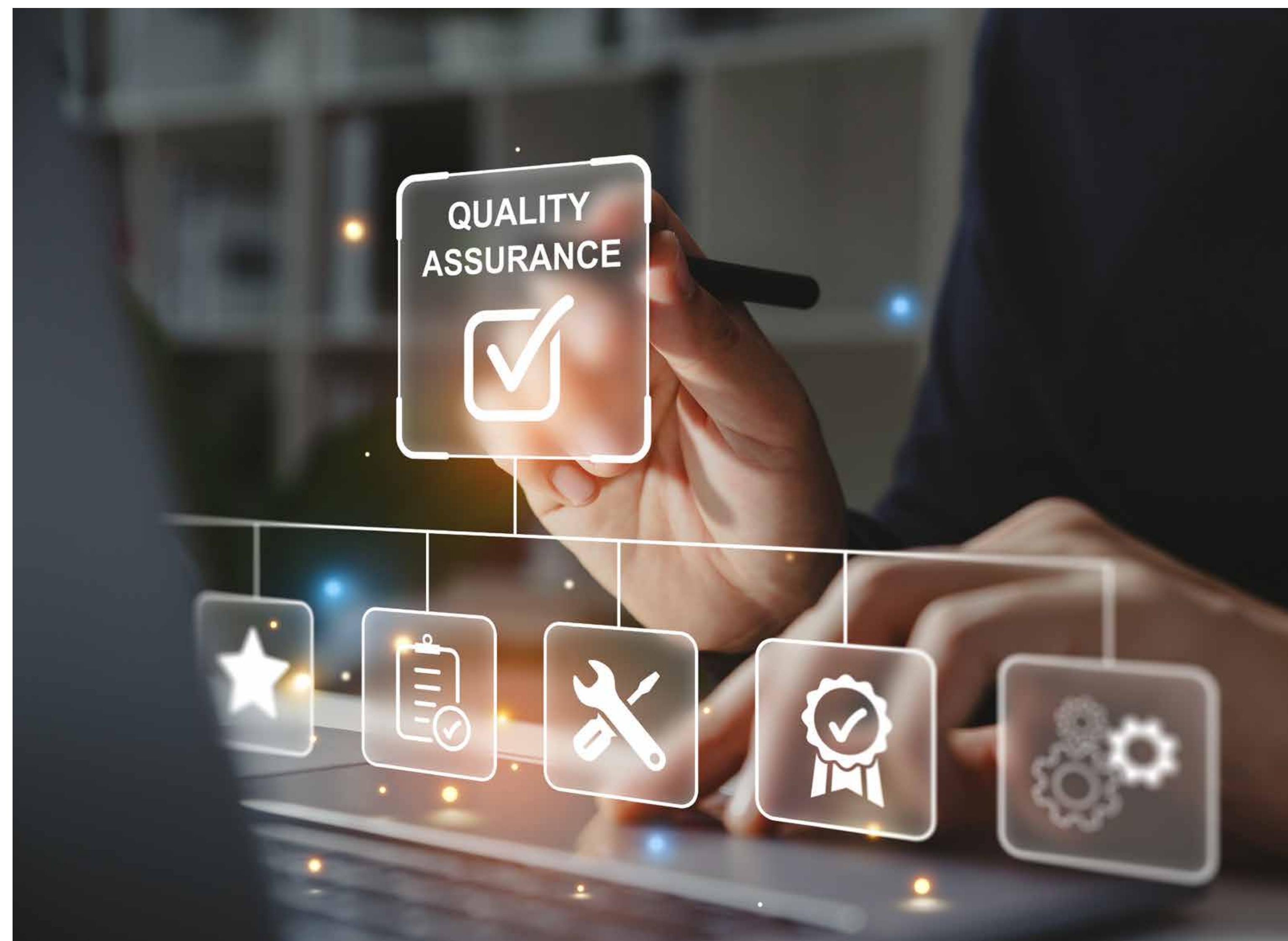
**Our sourcing policy is designed to create a transparent supply chain** that aligns with global best practices, delivering superior façade solutions while maintaining our commitment to environmental and social responsibility.



## Achieving Optimum Procurement by Shortening Lead-times

We strive to shorten lead-times for procurement, product development, production & administrative processing to run the project as per schedule by closely collaborating with our various suppliers.

Transparent Supply Chain



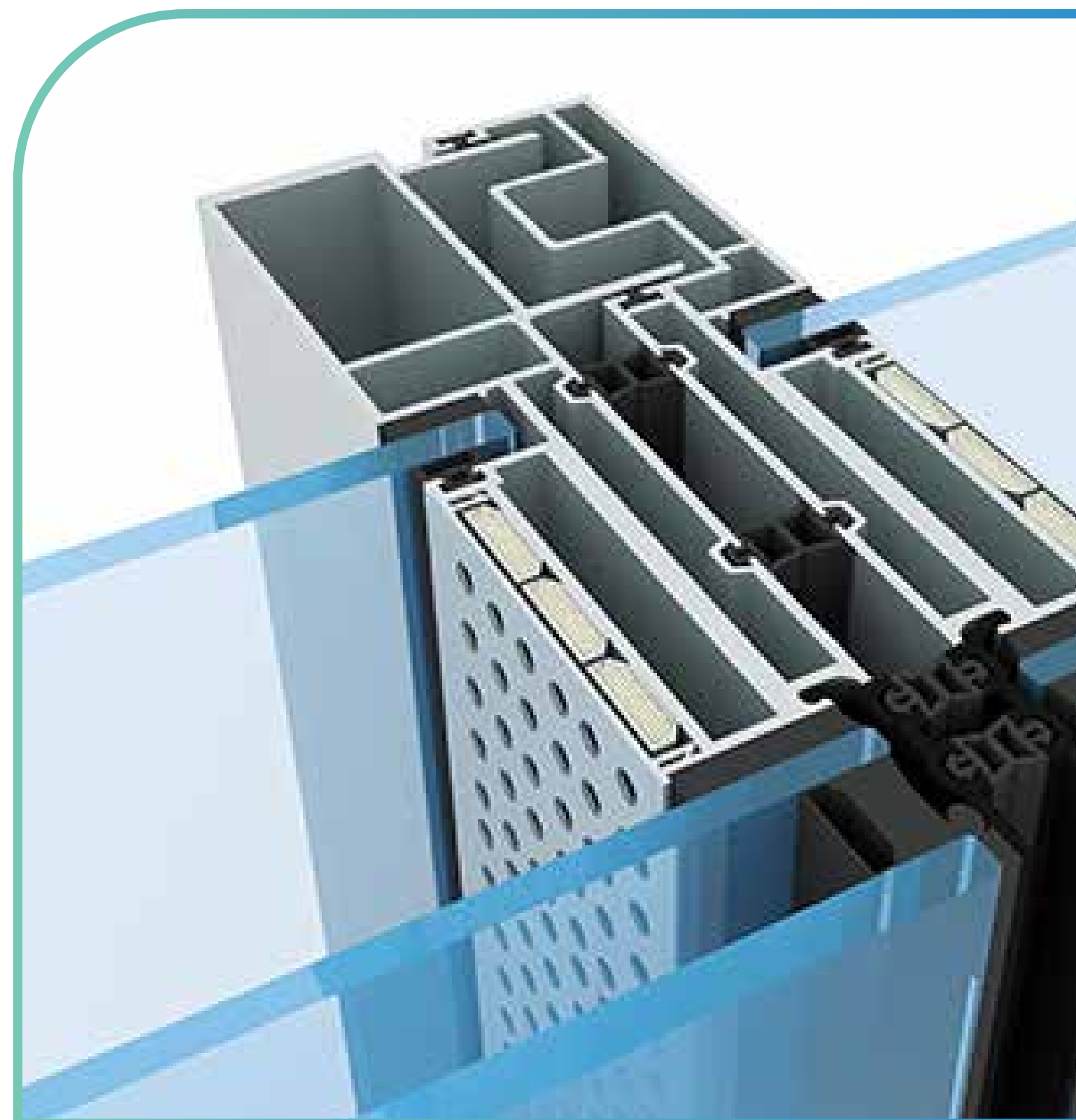
Quality Assurance

## Ensuring Product Quality and Safety

In line with quality assurance policy, we clarify the quality levels & standards that procure materials and products fulfill the optimum requirement and maintain the required quality.

# Technical Collaborators

Our partnerships with **leading global experts & industry specialists** enable us to integrate advanced materials, cutting-edge innovations & best practices into our façade solutions.



## Extrusions

- Sapa
- Jindal
- Bhoruka
- Hindalco
- Global Aluminium



## Glass

- Saint Gobain
- Asahi
- PPG
- Emirates
- Guardian



## Sealants

- Dow Corning
- GE Momentive



## Hardware

- Dorma
- Kinlong
- Alualpha
- LGF Sysmac
- LAVAL

An aerial photograph of a city park. In the foreground, there are several outdoor sports courts with green and blue surfaces, enclosed by a black fence. A paved road curves through the park, with a landscaped median. The background features a dense forest of green trees and several tall, modern skyscrapers under a clear blue sky with light clouds.

# Our Projects

At Evolvere Facades, infrastructure is more than just a facility—it is the foundation of our commitment to delivering world-class façade solutions that shape the skyline of tomorrow.

# MIAL Mumbai International Airport

---

Mumbai | 18000 sq. mtr

CLIENT  
**GVK**

ARCHITECT  
**HOK**

Chhatrapati Shivaji Maharaj International Airport (Formerly Mumbai International Airport) has been selected as a **Winner Of The 2020 Aia Architecture Award**. The program honors outstanding architecture across all typologies, and endeavors to recognize buildings that raise the bar in transformative design.



# Adani Corporate Office - Phase I

Ahmedabad | 45000 sq. mtr

CLIENT

**Adnani**

ARCHITECT

**ArchGroup**

A landmark development showcasing the ethos of innovation and sustainability, the adani corporate office stands as one of the most prestigious corporate buildings in india. **The project has been awarded in 2019 for Aerodynamic Form Of Architecture, recognizing its unique design and sustainable features.**



# Seawoods Grand Central

---

Navi Mumbai | 64600 sq. mtr

CLIENT

**L & T Realty**

ARCHITECT

**HOK**

Seawoods Grand Central Mall is the largest mall and commercial space in Mumbai, setting a new standard in retail and business environments. This iconic development blends shopping, entertainment, and commercial spaces in a single, integrated hub. The facade is designed with a complete unitized system, incorporating reeds that create an aqua wave effect, giving the building a dynamic and fluid appearance.



# DRPL Hyderabad

---

Hyderabad | 30000 sq. mtr

CLIENT

**Sattva Group**

ARCHITECT

**RSP Architects**

The DRPL project, a major commercial workspace in Hyderabad Hightech City, required timely execution amid evolving project demands. The facade design integrates energy-efficient glazing, textured metal panels, and dynamic vertical elements, promoting aesthetic appeal while enhancing building performance.



# HDFC Bank

---

Kolkata | 37000 sq. mtr

CLIENT  
**JMC**

ARCHITECT  
**Ghosh Bose & Associates**

A key highlight of the facade is the design element on the Aluminium Solid Sheet, featuring intricate perforations that create a stunning diamond-shaped finish in 2D. This distinctive design not only enhances the building's aesthetic appeal but also adds a layer of sophistication, making it a standout in the New Town skyline. The project combines innovation, precision, and creativity, ensuring a highly functional and visually impressive structure.



# Kumar Planet IT Park

---

Pune

22500 sq. mtr

CLIENT

**Kumar Properties**

ARCHITECT

**KIPA**

Kumar Planet IT Park is a remarkable development that stands out with its sleek and modern facade design. The building features a combination of aluminium composite panels (acp) and semi-unitized fully glazed systems, offering a balance of aesthetics, functionality, and performance.



# Ascendas MTB-5 Campus

---

Bangalore | 19700 sq. mtr

CLIENT  
**JMC**

ARCHITECT  
**DSP Designs**

Ascendas MTB-5 was an extremely fast-track project completed on a war footing during the first wave of covid-19. The execution of this project presented significant logistical challenges, with multiple lockdowns across states disrupting the supply chain. Despite these constraints, the project was managed from both our pune and bangalore factories simultaneously, ensuring rapid execution.



# Ruby Hall Cancer Center

---

Pune | 20000 sq. mtr

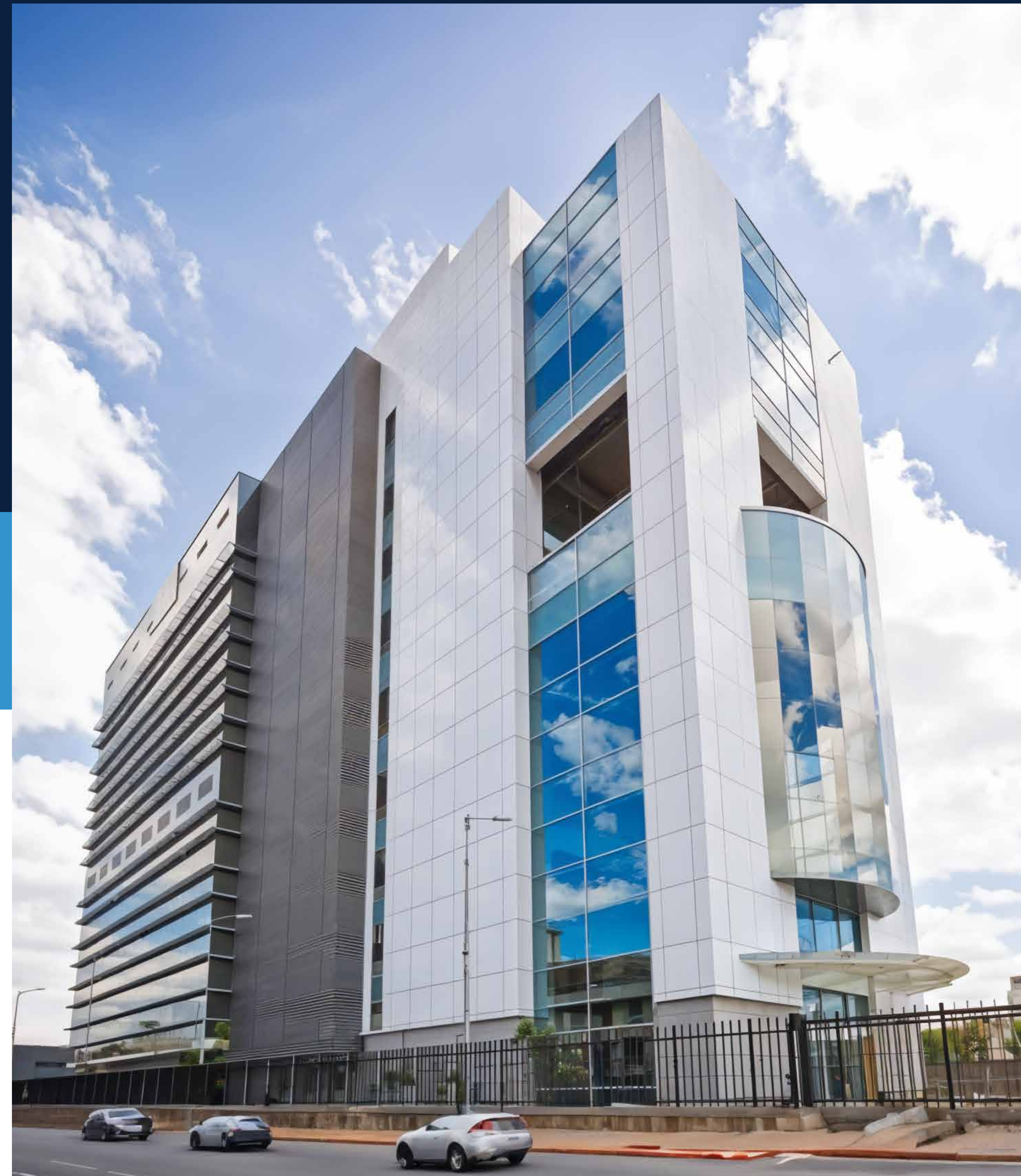
CLIENT

**Grant Medical Foundation**

ARCHITECT

**Chaney Architects**

As part of a major renovation and expansion, ruby hall clinic aimed to modernize its facade for improved patient access and experience. Major facade elements include high-performance glazing, composite panels for enhanced aesthetics, and integration of natural light features to create a healing environment.



# Dassault Systemes

---

Pune

9900 sq. mtr

CLIENT

**Dassault**

ARCHITECT

**Beyond Design**

Dassault Systems - Sky Tower is one of the most unique facade constructions we have undertaken, located in the IT hub of Hinjewadi, Pune. **The 'Sky Tower Go-Live Despite COVID Times' project was honored by the '3DS INNOVATION FORWARDS 2021' Awards, Dassault Systemes' in house competition that rewards the year's most innovative team projects.**



# Capgemini Pune Campus

---

Pune | 35000 sq. mtr

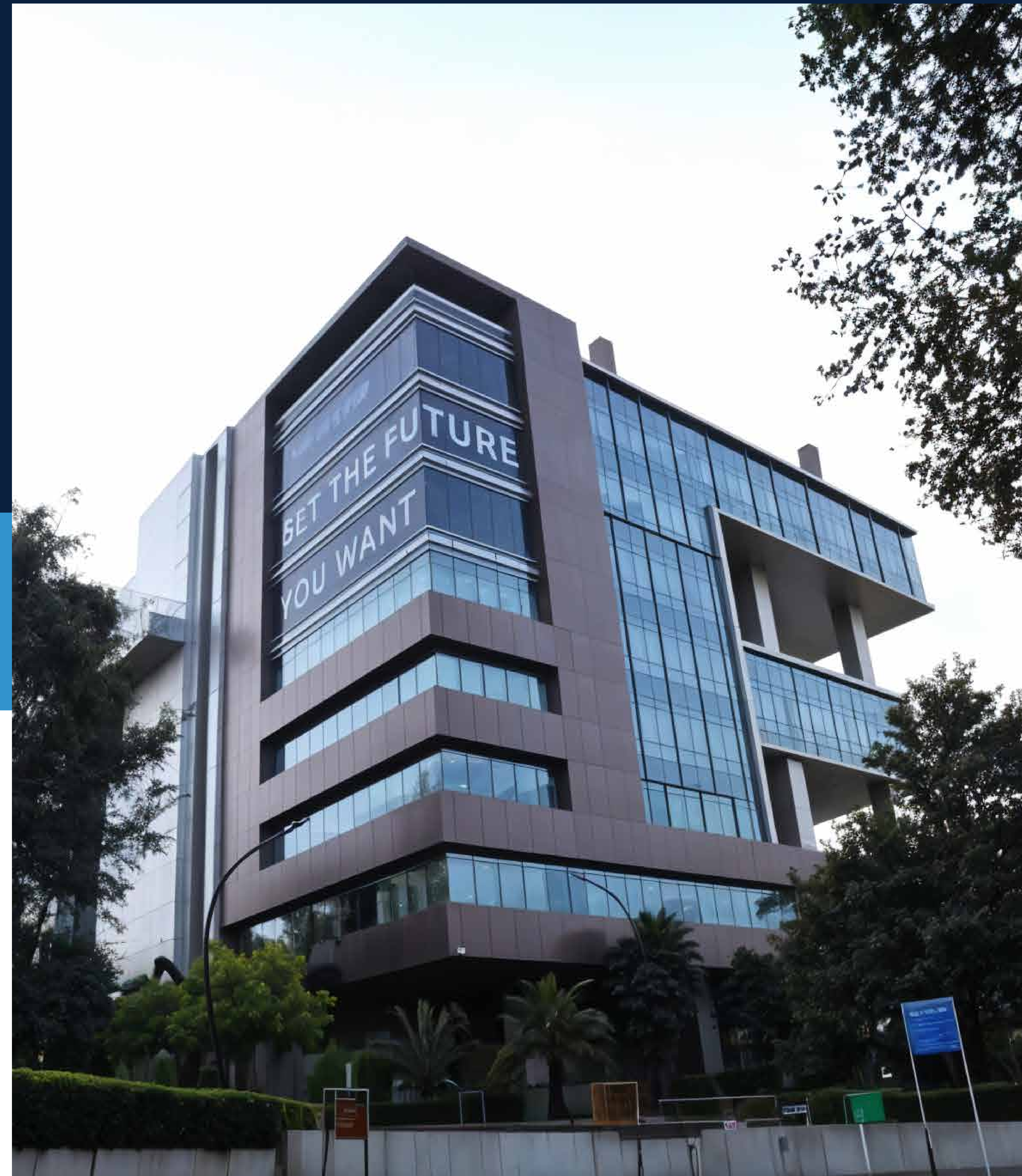
CLIENT

**Capgemini**

ARCHITECT

**Metaphor Designs**

A flagship office development for one of the world's leading consulting firms, Capgemini's new premises required a contemporary facade design to reflect its innovative ethos. The facade features a unitized curtain wall system with low-emissivity glass, dynamic sun shading devices, and integrated green elements, such as vertical garden panels, which contribute to the building's sustainability goals.



# DLF Akruti

---

Hinjewadi | 35000 sq. mtr

CLIENT

**Akruti Builders**

ARCHITECT

**Arch. Hafeez Contractor**

One of the largest campuses in Hinjawadi, DLF – Akruti is a cutting-edge development designed to accommodate modern corporate needs. The facade combines semi-unitized glazing and spider glazing, offering a sleek and contemporary aesthetic while ensuring high performance in terms of energy efficiency and natural light optimization.



# Kumar Seinna

---

Pune | 21270 sq. mtr

CLIENT

**Kumar Properties**

ARCHITECT

**Farhad Khareghat**

Kumar Seinna stands as a premier residential building in Pune, exemplifying contemporary design and architectural elegance. This project was meticulously catered for from our Pune office, ensuring local expertise and commitment to quality. The facade features a sophisticated unitized glazing system, complemented by vertical and horizontal aluminum bands, which add a sleek, modern aesthetic.



# Unicorn 844

Mumbai | 13698 sq. mtr

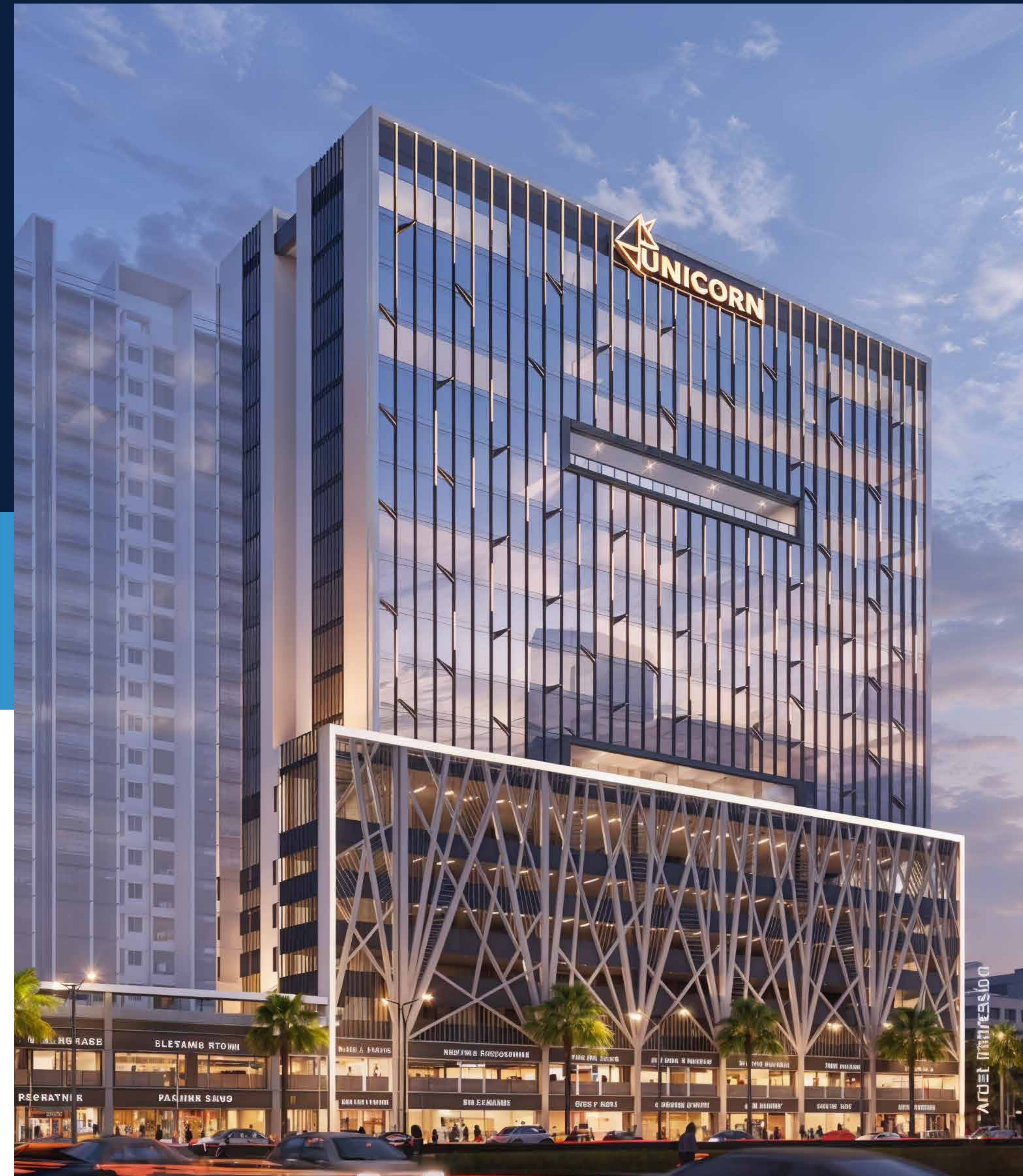
CLIENT

**Chandak Group**

ARCHITECT

**Ingrain Architects**

Unicorn 844 is distinguished by its unique and dynamic facade design, featuring key elements such as unitized glazing, semi-unitized glazing, vertical louvers and fins, as well as a striking aluminium horn element, which provides the building with an exceptional elevational presence in the surrounding area. The project has been honored with **The Economic Times Real Estate Awards 2025 for Iconic Project – Commercial (West Zone)**.



# HCL IT Park

---

Noida | 27000 sq. mtr

CLIENT

**L & T Constructions**

ARCHITECT

**Arch.Rajendra Kumar**

As part of HCL's corporate expansion, this project focused on delivering a modern workspace that inspires innovation and collaboration. Despite challenges posed by specific design requirements, our team successfully executed a facade featuring transparent glass panels, natural ventilation systems, and integrated shading elements.



# MCA Stadium

---

Pune | 11700 sq. mtr

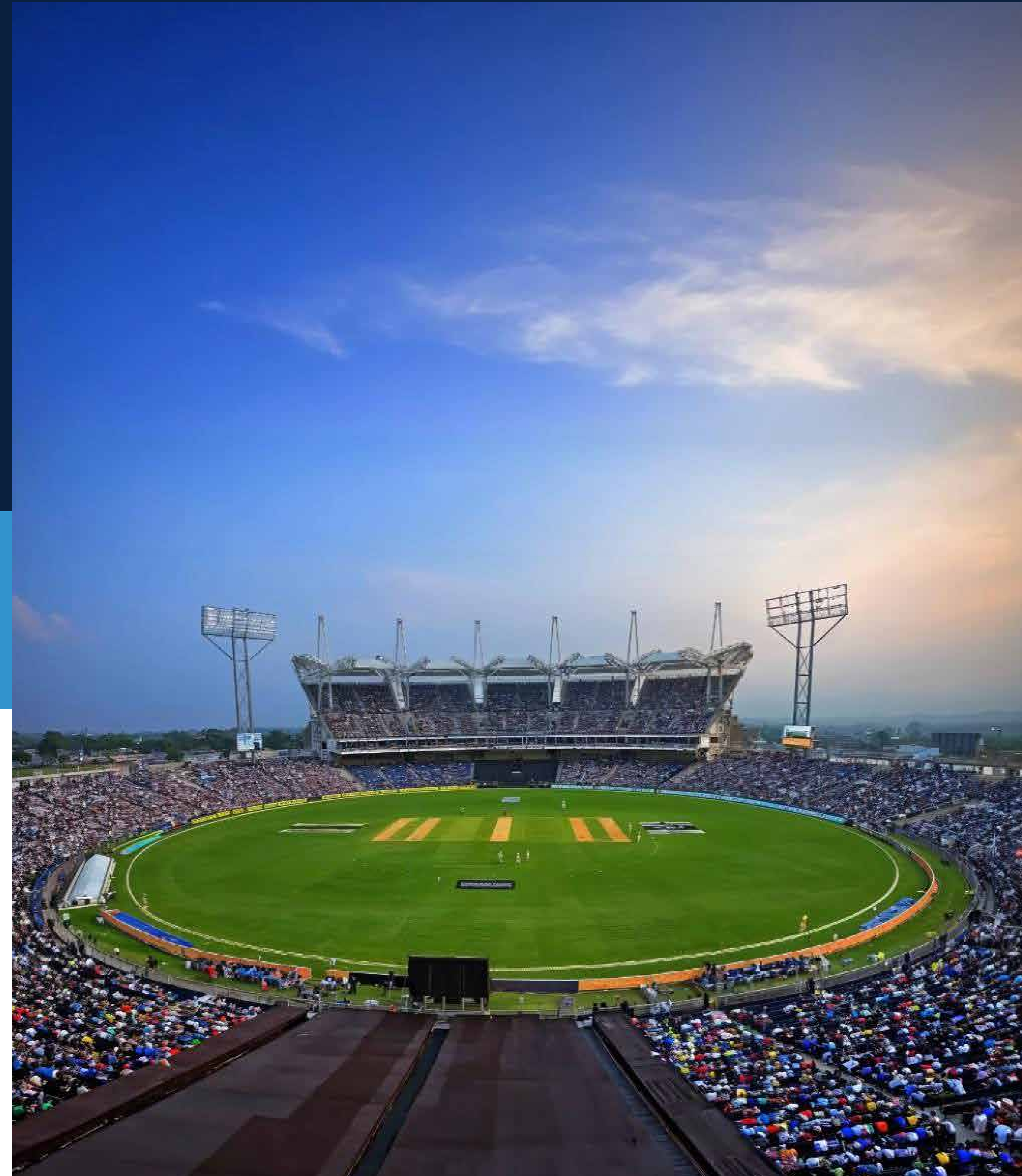
CLIENT

**SP**

ARCHITECT

**Hopkins Architects London**

The MCA Stadium in Pune features a remarkable facade designed and installed by our expert team, blending cutting-edge materials and techniques to create a striking, durable, and sustainable exterior for the 45,000-seat stadium. The innovative design combines metal and glass elements, enhancing the stadium's modern appearance while ensuring superior performance and safety.



# The Ritz Carlton

---

Pune

9000 sq. mtr

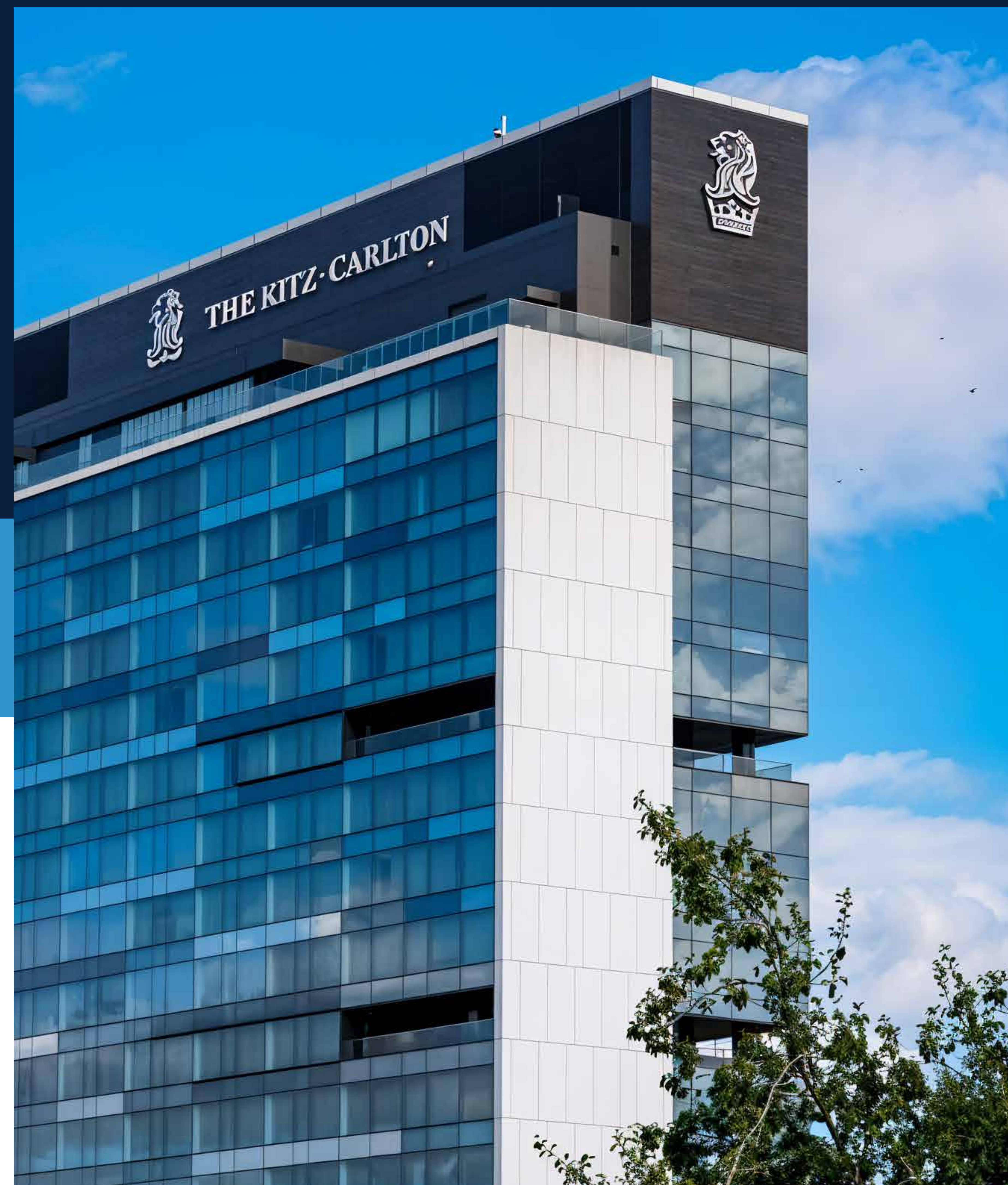
CLIENT

**Panchshil**

ARCHITECT

**Madhav Joshi & Associates**

An iconic luxury hotel that redefines opulence in Pune, this project showcased sophisticated facade engineering at its finest. The execution faced challenges due to the project's scale and intricate details. Key elements include custom-designed panel systems with intricate finishes, large-format glazing, and elegant external shading features.

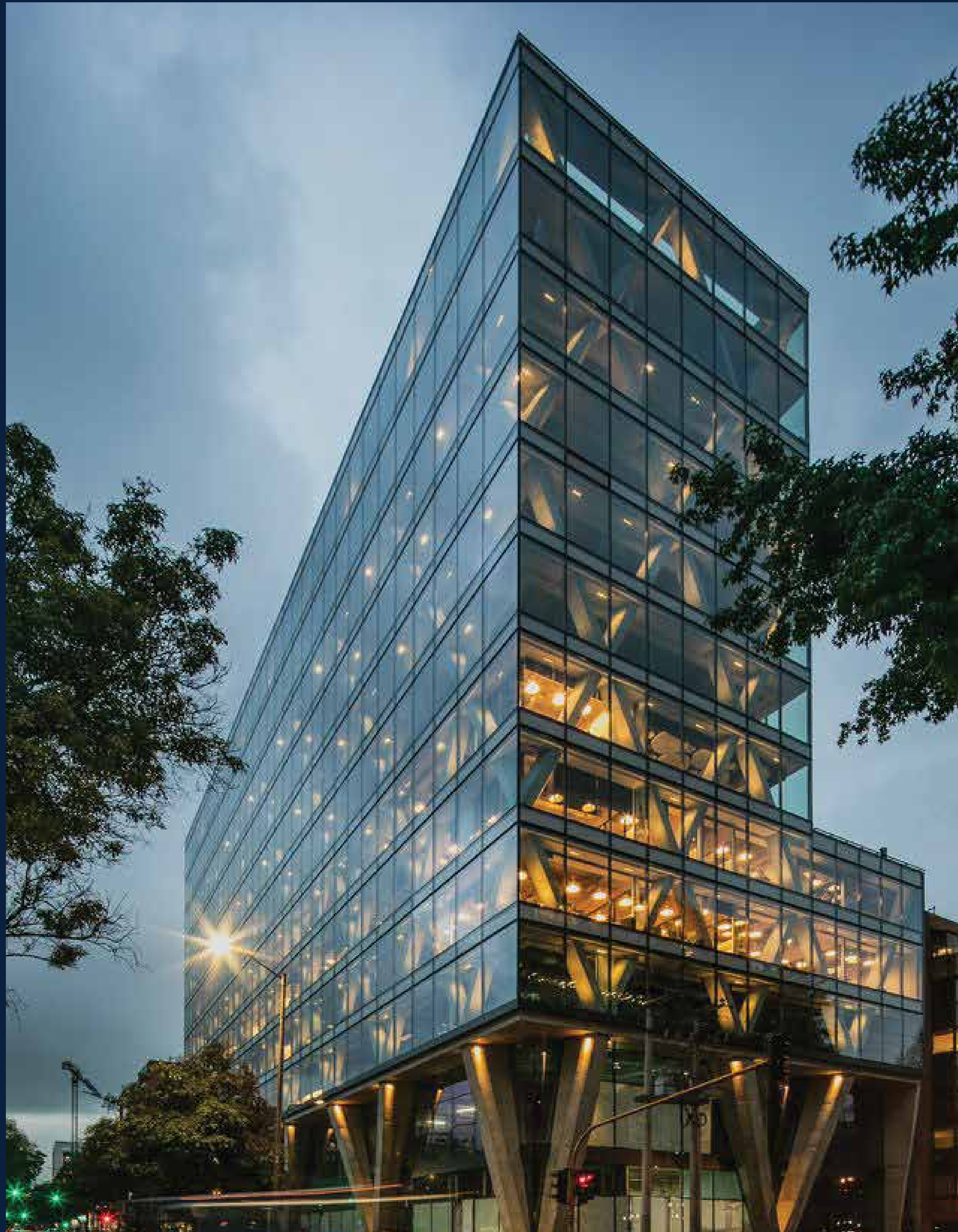


# Our Esteemed Clients & Trusted Partnerships



# Our Esteemed Clients & Trusted Partnerships





# Contact Us



## Call

+91-7030088444

+91-7030022444

02026454244

## Head Office

Sai Gaurav, B-Wing, 2040

Jan Mohammad Street, Near

Babajan Chowk, Camp, Pune 411001

## Mail

[info@evolverefacades.com](mailto:info@evolverefacades.com)

## Website

[www.evolverefacades.com](http://www.evolverefacades.com)